

Blocker Knee Joint



Features

Sizes available for **small to large** patients

Fabricated from **high-strength aluminum**

+ Available in **0°, 10°, 20°** oder **30°** of flexion

Standard

Fully assembled as one item for clear cost estimates and uncomplicated ordering

Integrated upright bars ensure **optimal transfer of force**

Upper section **CNC-machined from one piece** of material for increased stability

Precise assembly calibrated to 1/100mm with self-lubricating washers for smooth operation free of play

Maintenance-free stainless steel joint assembly with bronze bushing

Unrivalled **20-month guarantee**

Engraved **serial number** for traceability

Clearly illustrated instructions for use

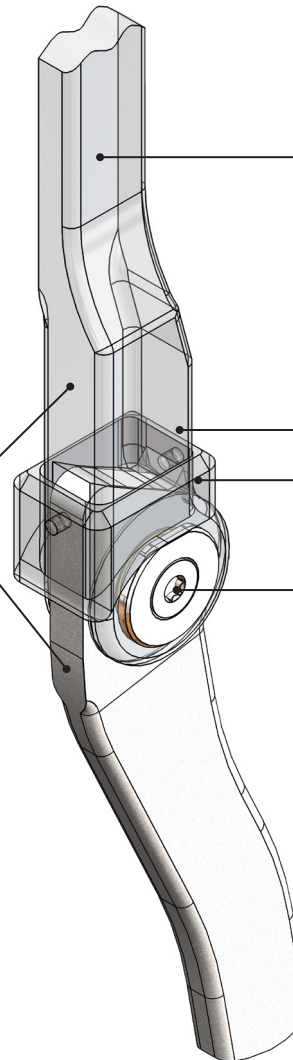
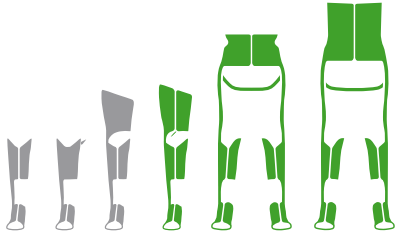
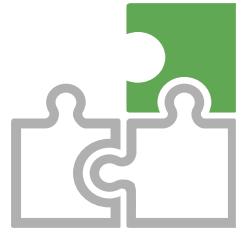


Fig. left

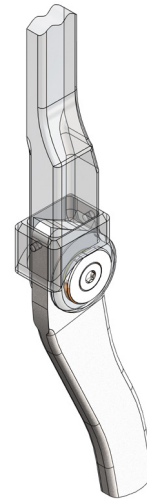


We recommend using our configurator to make your selection.
The configurator considers, among other factors, weight to height ratios.



Weight Classification (body weight)

Article No.	with angle	KAFO	HKAFO/RGO
Blocker-25-	10-, 20-, 30- G	up to 20 kg	up to 15 kg
Blocker-28-	10-, 20-, 30- G	up to 30 kg	up to 20 kg
Blocker-30-	10-, 20-, 30- G	up to 35 kg	up to 30 kg
Blocker-32-	00-, 10-, 20-, 30- G	up to 50 kg	up to 40 kg
Blocker-36-	00-, 10-, 20-, 30- G	up to 70 kg	up to 50 kg
Blocker-40-	00-, 10-, 20-, 30- G	up to 85 kg	up to 65 kg
Blocker-40-Plus-	00-, 10-, 20-, 30- G	up to 85 kg	up to 85 kg



Joint

Width	Thickness	Drop Lock Thickness
25 mm	13,0 mm	16,5 mm
28 mm	15,0 mm	19,5 mm
30 mm	16,0 mm	20,5 mm
32 mm	17,0 mm	21,0 mm
34 mm	17,0 mm	21,0 mm
40 mm	21,0 mm	26,0 mm
40 mm	22,0 mm	28,0 mm



Locked



Extension



Flexion

Posterior Offset

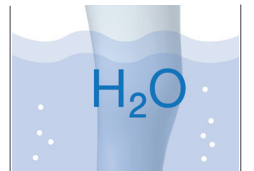
Modular

Force Options



No Grinding Necessary

Noise Dampening



Water Resistant