

Buran-2D Hip Joint



Features

Sizes available for **small to large** patients

Fabricated from **high-strength aluminium**

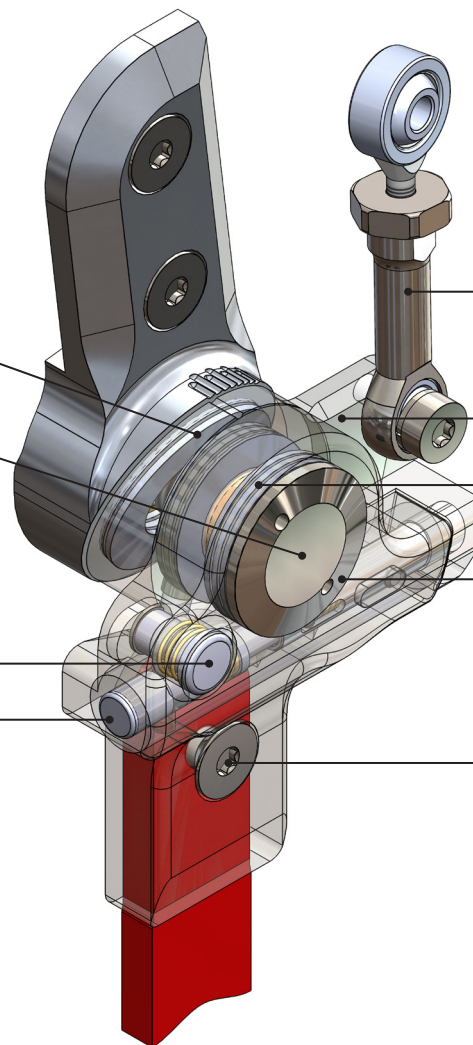
+ **Pelvic rotation** for efficient and energy saving gait.
Joint axis is tilted **20° from vertical**

+ **Independent sitting axis** runs horizontally
and allows up to **155° flexion**

+ **Pre-select locking mechanism**
with 2-step opening and closing

+ **Push button** unlocks joints, which open
when hips are fully extended and
tension on the locking pins relieved

+ To stand up, joints are placed in the **locked position**
and **automatically** snap into place upon full hip extension



Standard

Fully assembled as one item for clear
cost estimates and uncomplicated ordering

Secure and adjustable connection to pelvic band

Movement is transferred via **adjustable connectors** and
rocker bar mechanism to the contralateral side, enabling
reciprocal gait.

Rigid stainless steel connecting plate cannot be bent

Long-life thrust bearings for smooth operation free of play

Maintenance-free stainless steel joint assembly
with bronze bushing

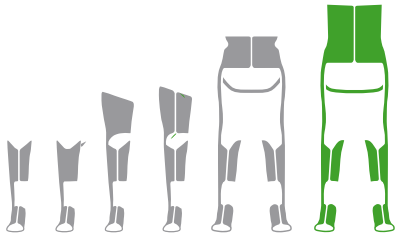
Machined upright and offset connection ensure
optimal transfer of force

Unrivalled **20-month guarantee**

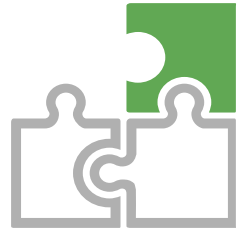
Engraved **serial number** for traceability

Clearly illustrated instructions for use

Fig. left

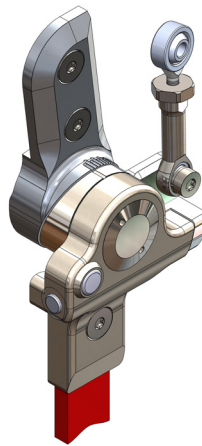


We recommend using our configurator to make your selection.
The configurator considers, among other factors, weight to height ratios.



Weight Classification (body weight)

Joint



Article No.	RGO	Width	Thickness	Height
Buran-2D-klein	up to 25 kg	36 mm	37,5 mm	131,5 mm
Buran-2D-mittel	up to 50 kg	36 mm	37,5 mm	138,5 mm
Buran-2D-groß	up to 65 kg	36 mm	37,5 mm	138,5 mm
Buran-2D-ex-groß	up to 85 kg	36 mm	37,5 mm	144,5 mm



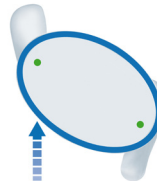
Locked



Extension



Flexion



Step Length



with Pelvic Rotation

Abduction



and Adduction



No Grinding
Necessary