

Easy-A Ankle Joint



Features

Waterproof for all situations

- + Active support during **midstance**
- + Active support of the **heel rocker**
- + Resists foot drop during **swing phase**
- + Combine between 2 different **spring forces** or **stop pins**

Noise dampening, quiet operation promotes acceptance

+ Upper section fabricated **high-strength aluminium**

Robust, **stainless steel** springs and ball bearings

Bronze movement stops

Range of motion up to **17° dorsiflexion** and **17° plantarflexion** for adjustments to alignment and stops

Exclusive contour for **more stability**

Anchoring points to secure lamination materials

Pre-bent on request

Standard

Fully assembled as one item for clear cost estimates and uncomplicated ordering

Available with **long or short upright**

Upper section **CNC-machined from one piece** of material for increased stability

Machined upright and offset connection ensure **optimal transfer of force**

Precise assembly calibrated to 1/100mm with self-lubricating washers for smooth operation free of play

Maintenance-free stainless steel joint assembly with bronze bushing

Unrivalled **20-month guarantee**

Engraved **serial number** for traceability

Clearly illustrated instructions for use

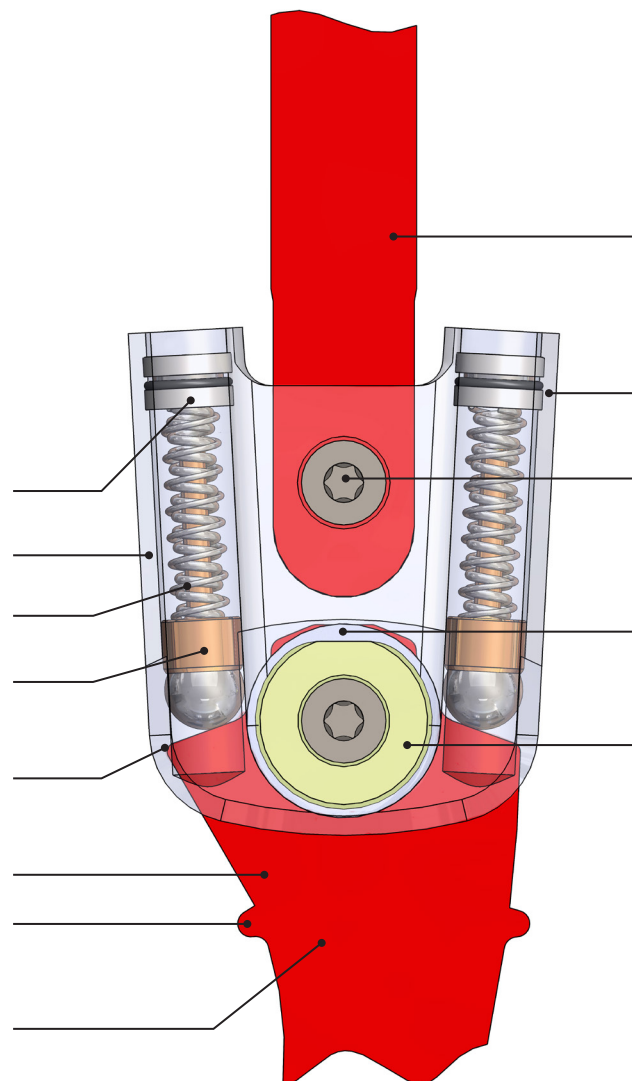
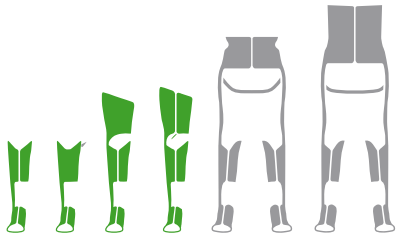
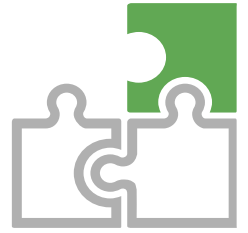


Fig. left

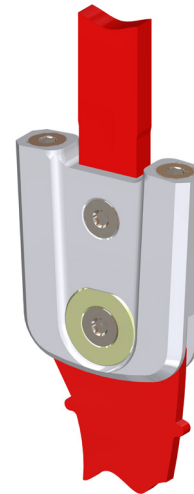


We recommend using our configurator to make your selection.
The configurator considers, among other factors, weight to height ratios.



Weight Classification (body weight)

Article No.	AFO/KAFO	For More Force
Easy-A-19	up to 10 kg	–
Easy-A-22	up to 15 kg	up to 10 kg
Easy-A-25	up to 25 kg	up to 15 kg
Easy-A-28	up to 40 kg	up to 30 kg
Easy-A-30	not yet available	
Easy-A-32	not yet available	
Easy-A-34	not yet available	



Joint

Width	Thickness	Height
34 mm	9,0 mm	42 mm
39 mm	9,5 mm	46 mm
44 mm	11,5 mm	52 mm
49 mm	12,0 mm	58 mm
–	–	–
–	–	–
–	–	–

Adjustable Alignment

Modular

Force Options

Range of Motion

Swing Phase

Quick Adjustment

Interchangeable Stops

No Grinding Necessary

Noise Dampening

Water Resistant